



EDMONTON COUNTY Primary



IMPORTANT NOTICE - NO STOPPING

Please take great care around the school area.
Drivers, please take responsibility and avoid parking near the school to ease the congestion.

Parking on yellow lines, corners of roads or blocking the driveways of residents (even for a few minutes), is not safe for others.



Please park away from the school in the many side roads and walk the last part of the journey. Please allow more time for your morning and afternoon route, to avoid rushing and making unsafe decisions.



ENGLISH CLASSES



- Introduction to English language
- Designed specifically for parents/carers who speak English as a second language
- Aims to build self-confidence
- Develops communication skills

Classes will be held on **Fridays**
between 3rd May - 28th June

1pm-3pm

At Edmonton County Primary School

To register your interest please email
Mrs Roberts at
ecsprimaryenquiries@edact.org.uk





Edmonton County Primary School


STAY AND PLAY



We have spaces for admissions to our Reception class for September 2024.

Come along with your child to play and tour our school!

Every Thursday morning
10:15am - 11:30am

Little Bury Street, Edmonton, London N9 9JZ





Cress

As part of our topic: **Food and growing** the children in Dragonfly class planted some cress seeds the first week back after half term.

The children looked after the cress by making sure their pots were kept in the sunshine and watered.

After 7 days the cress had grown enough to eat!



This week the children all made their own cress sandwiches





Summer Fair 2024 Friday 12th July

3.15-5pm

We need your help!

We are going to start collecting donations early for the following items needed for the fair:

- ♦ Any bottles, wine or toiletries for the Bottle Tombola
- ♦ Any preloved soft toys for the Soft Toy Tombola
- ♦ Any books for the preloved Book Stall
- ♦ Any preloved toys for the Preloved Toy Stall
- ♦ Any individually wrapped sweets e.g. Chewits, Haribo, Maoam's etc.

Please bring any donations into the school office from Monday 25th March to Friday 24th May

**Any donations will be gratefully received to help make the Summer Fair a success for our school community.
All money raised from the Summer Fair will be used in creating a Trim Trail for the playground**



Thank you in advance for all your support

Ms R Badman, Emma (Year 5 Class Rep) & Holly (Year 3 Class Rep)

ATTENTION BUSINESS OWNERS

Dear Business owner,

I am a teacher at Edmonton County Primary School, and I am looking for local businesses to sponsor stalls or donate raffle prizes at our Summer Fair on Friday 12th July 2024, 3.15-5pm.

What we are looking for:

- * Sponsoring a stall for £30 (it could be the bar, beat the goalie, candy floss or popcorn stall. More stalls to be confirmed)
- * Donate a raffle prize e.g., a gift voucher for lunch, a free haircut etc.
- * Donate items e.g., cakes, biscuits, bottles for us to sell on our stalls

What you will receive:

- * Your business logo printed in our Summer Fair programme given to every family that attends (the school as over 200 children).
- * If sponsoring a stall – a sign on the stall saying it is sponsored by your business as well as being in the programme.

If you feel you would be able to help your local primary school and community then please let me know by emailing
ECPSfairs@edact.org.uk

Thank you for your time

Rebecca Badman
Primary PE Co-ordinator





UNDERSTANDING YOUR CHILD
SOLIHULL APPROACH

inourplace

NHS

Understanding your child with additional needs

Free online course for all parents, carers, and grandparents.

- Reading your child's behaviour and understanding their feelings
- Effective communication techniques
- Reflecting on your relationship and how to nurture your child's emotional health
- A transformative journey that can strengthen your bond with your child at every age

Designed by clinical psychologists in partnership with practitioners and parents



www.inourplace.co.uk



Residents of ENFIELD

In paid partnership with:



Use Access Code
PYMMES

UNDERSTANDING YOUR CHILD
SOLIHULL APPROACH

inourplace

NHS

Supporting emotional health and wellbeing from 0-19+

Free online courses for all parents, carers, grandparents and teens

- Antenatal and postnatal baby bonding
- Understanding your child or young person
- Your child or young person with additional needs
- Teenager's feelings and brain development
- And lots more specialist courses

Designed by clinical psychologists in partnership with practitioners and parents



www.inourplace.co.uk



Residents of ENFIELD

In paid partnership with:



Use Access Code
PYMMES



UNDERSTANDING YOUR CHILD
SOLIHULL APPROACH

inourplace

NHS

Understanding your relationships

Free online course to follow in your own time to help understand your relationships and your mental health.

- Understanding your emotions in your relationships
- Communicating feelings and expressing yourself
- Reading others behaviours and different communication styles
- Managing conflict, self-regulation and anger

Designed by expert psychologists in partnership with people



Residents of ENFIELD

In paid partnership with:



Use Access Code
PYMMES



Baby and Us



A free 9-week programme run by trained local parents for local parents.

Learn how to bond with your baby, understand their needs, look after your wellbeing and meet new friends.

Suitable for parents of babies 0-9 months



Date: 09/05/2024 to 11/07/2024

(No session on 30/05/2024)

Time: 9.30am for a 10am start until 11.30am

Location: Ponders End Youth & Family Hub, 129 South Street, Enfield, EN3 4PX

For more information or to book on please contact:

Katrina - 07719324861-
Katrina.O'Gorman@enfield.gov.uk

Nadine - 07719324754 -
Nadine.Small@enfield.gov.uk



Positive Co-Parenting of Neurodiverse Children 8-week online facilitated group

This programme is designed specifically for parents living together or apart, who are facing conflicts and struggling to find common ground in raising their neurodiverse child. This is a valuable opportunity to enhance relationships, strengthen parenting skills and create a more harmonious home environment.

Who should attend?

- Parents who are experiencing conflicts and challenges due to the neurodiversity of their child
- Parents who want to improve communication and build stronger partnership in parenting and co-parenting their neurodiverse child.
- Parents seeking guidance, support, and practical strategies to navigate the unique challenges of raising a neurodiverse child.

These 2 courses will be delivered via MS Teams, over 8 sessions on the following dates/times:

Date: Tuesday 14, 21 May & 4, 11, 18, 25 June & 2, 9 July.
Time: 7.00 pm to 9.00 pm

Date: Wednesday 15, 22 May & 5, 12, 19, 26 June & 3, 10 July.
Time: 9.30 am - 11.30 am

For more information or to make a referral, scan the QR code, email services@familylives.org.uk or call 0204 522 8700 or 0204 522 8699



We build better family lives together

www.familylives.org.uk

@FamilyLivesHertsandBeds

Funded by



EMPOWERING PARENTS
EMPOWERING COMMUNITIES



YOUTH & FAMILY
HUB
HELPING CHILDREN, YOUNG PEOPLE AND FAMILIES THRIVE

Family Lives is registered as a company limited by guarantee in England and Wales No. 3817762. Registered charity No. 1077722. Registered address: The Annex York House, Salisbury Square, Hatfield, Hertfordshire, AL9 5AD



Term Dates 2023- 24

Summer Term 2024

First half: Monday 15 April - Friday 24 May 2024

Half-term: Monday 27 May - Friday 31 May 2024

Second half: Monday 03 June - Friday 19 July 2024

Bank Holiday - 6th May 2024



Upcoming events

♦ **Friday 12th July** – Summer Fair 2024 – 3.15–5pm

Term Dates 2024- 25

Autumn Term 2024

INSET – Monday 02 September 2024

First half: Tuesday 03 September 2024 – Thursday 24 October 2024

Half-term: Friday 25 October 2024 – Friday 1 November 2024

Second half: Monday 4 November 2024 – Thursday 19 December 2024

INSET – Friday 20 December 2024

Spring Term 2025

First half: Monday 06 January 2025 – Friday 14 February 2025

Half-term: Monday 17 February 2025 – Friday 21 February 2025

Second half: Monday 24 February 2025 – Friday 4 April 2025

INSET – Friday 7 March 2025

Summer Term 2025

First half: Tuesday 22 April 2025 – Friday 23 May 2025

Half-term: Monday 26 May 2025 – Friday 30 May 2025

Second half: Monday 02 June 2025 – Friday 18 July 2025

INSET – Staff Professional Development Days – School is closed to students

Monday 02 September 2024

Friday 20 December 2024

Friday 7 March 2025

Public & Bank Holidays

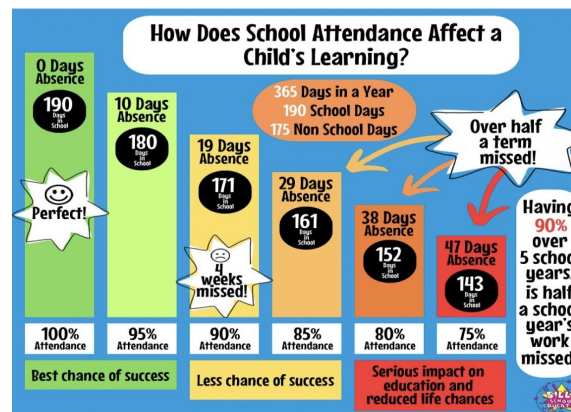
Christmas Holiday: Wednesday 25 December and Thursday 26 December 2024

New Year's Day: Wednesday 01 January 2025

Easter Holiday: Friday 18 April and Monday 21 April 2025

Spring Holiday: Monday 05 and Monday 26 May 2025

Summer Holiday: Monday 25 August 2025



Contact Us

Head of Primary: Mrs E Franciosa

Head of School: Mr P Miller

Executive Headteacher: Dr S Tranter MA

Telephone: 020 8360 3158

Email: ecsprimaryenquiries@edact.org.uk

Website: edmontoncountypriamry.org.uk

Address: Little Bury Street, Edmonton, London, N9 9JZ



Follow Follow our Socials to keep up to date

@edmonton_county_primary

@ECSPriamry